

Cie kraD

Compagnie kraD
c/o Claudia Cerri
Rue de l'Industrie 8
1201 Geneva - Switzerland
[IDE : CHE-285.998.550]

Contacts :
cie@krad.xyz

Performance / Vertical rope : **Leïla Maillard +41 79 574 89 64**
leila.circusartist@outlook.com

Performance / Sound : **Claudia Cerri +41 77 477 50 53**
nur@unko.ch

Lights : **Claude Bariteau +41 78 929 97 68**
kiodims@hotmail.com

ARACHNUR

Technical rider

This technical rider states the company's requirements for the performance "ARACHNUR".

*If any of the points mentioned below are an issue, please do not hesitate to contact us.
EVERYTHING IS NEGOCIABLE !*

THE PERFORMANCE

The show is conceived for an informed audience. It is recommended from about 14 years of age on, due to the occurring nudity and high sound volume. Non-verbal.

"Arachnur" is a multidisciplinary performance mixing contemporary circus, vertical rope, and sound – noise - into a dark aesthetic.

Audience: frontal installation OR semi-circular (or 360° - but to be discussed in advance)

TIME SCHEDULE

Set-up: Four hour installation plus additional time for the light encoding and sound check. We are independent but a helping hand is always welcome!

Physical preparation: One hour
Access to the stage is required one hour before the show

Length of the show: 45 minutes

Disassembly: One hour

SPACE (see appendix 1: set-up plan)

***The complete space** on the ground should at least have the following parameters: **10 m deep / 10 m wide / 8 m height.**

The actual **stage** should consist of a circle with minimum **8 m diameter** and **8 m height.**

If the height is **less than 7m**, please **contact us** to discuss further possibilities.

*Provide a **static rigging point** suitable to accept a **standard connection of either a sling or carabiner** suspending a vertical rope. A **simple and safe access** to this point is also required.

The rigging point should be **central stage** or as close as possible to that and should support a **safe working load of minimum 500kg.**

*The rigging point should be **between 7 and 10 meters (ideally 8 m)**

Please provide details of this, so that Leïla can bring the required rigging material.

*The set-up contains a circle of LED candles on the ground.

*The floor space should be **flat** and even.

*The space should be (if possible) a **black box**; complete darkness must be possible. The ground should ideally be black, with or without a dance mat.

*During the show there are no entry or exit to and from the backstage.

*The artists are already on stage in the dark during the entry of the audience.

MATERIAL PROVIDED BY THE COMPAGNY:

Circus:

- Vertical rope
- Basic rigging kit: carabiner(s) and sling(s)
- Ropes

Sound:

- Mixing table
- All material needed to perform (microphones, effect pedals...)
- Trolley which is used as table

Lights:

- A light suspension (plan the circuit above the rigging point of the vertical rope, see appendix)
- Lamps and bulbs (ground circuits, see appendix)
- Oil lantern
- Small smoke machine 700W (on the trolley)

TO BE PROVIDED BY THE ORGANIZER:

Circus: More advanced rigging gear **if needed**, for example: additional slings / longer slings, equipment to access the rigging point

SOUND: (cf. appendix 3)

- 2 top and 2 subs (sound system **minimum 800 W**, to be put on stage – we play **INFRONT** of the sound system)
- 2 XLR 20m
- 1 electric cable 20 m (not on a cable reel!)
- 1 electrical plug socket (attached to the floor)
- 1 multi -socket
- 1 mixing table (sound booth)
- 1 stereo compressor (sound booth)
- 1 snake (two inputs) attached to the floor
- Adapter plug sockets if needed

LIGHTS: (cf. appendix 1 and 2)

- Dimmer 16 channels (including a 6 Digitour fluo dimmer or equivalent)
- Analog console 24 physical channel (live control, no programming, **the controller must have 24 faders**)
- Provide 2 channel on the grill and 10 channel on the ground, **all independent**
- 1PC 1Kw
- 7 Fluo 36W TL JULIAT, Wiland connector or equivalent- 6000k ideal (**The fluorescents must absolutely be dimmable.**)
- 1 Atomic 3000 or equivalent on stand
- Adapted wiring
- Smoke machine strongly appreciated

Additional comments:

The show contains elements of **fire** and **smoke**. (cigarette smoke, lighter, smoke machine)

In an enclosed space, **please disable the fire alarm system** and provide for necessary staff to ensure the audience's safety.

Due to the (very) high volume of the sound, we advise you to provide **earplugs** for the audience.

The show also contains **strobe effects**. Please inform the audience in order to avoid any kind of malaise during the performance.

The sound engineer / person responsible of the sound system should be aware of the genre of "music" - (harsh-)noise - we use for this performance and able to handle the show in consequence. If this is not possible, we can also come with our own sound engineer – which will consist of an additional fee and an additional person for accommodation and catering.

ACCOMMODATION / BACKSTAGE

Backstage:

***Three** people will use the backstage, which should be **as close as possible** to the performing space.

It should be **equipped with mirrors, clean** (also the floor!) and **heated at wish**.

*The access to **water, clean toilettes** and a clean shower is compulsory

*Two warm-up / yoga mats would be welcome.

*The dressing room should be **guarded or locked** during our absence / during the show.

*We appreciate if you offer fresh lemons, dried fruit, fruit juices, tea, beer (gluten free also!), Campari and sparkling water and / or other snacks before and after the show.

Any regional and/ or handmade speciality is welcome too.

Catering:

- one **vegan gluten-free**
- one vegetarian
- one extreme carnivore

Accommodation:

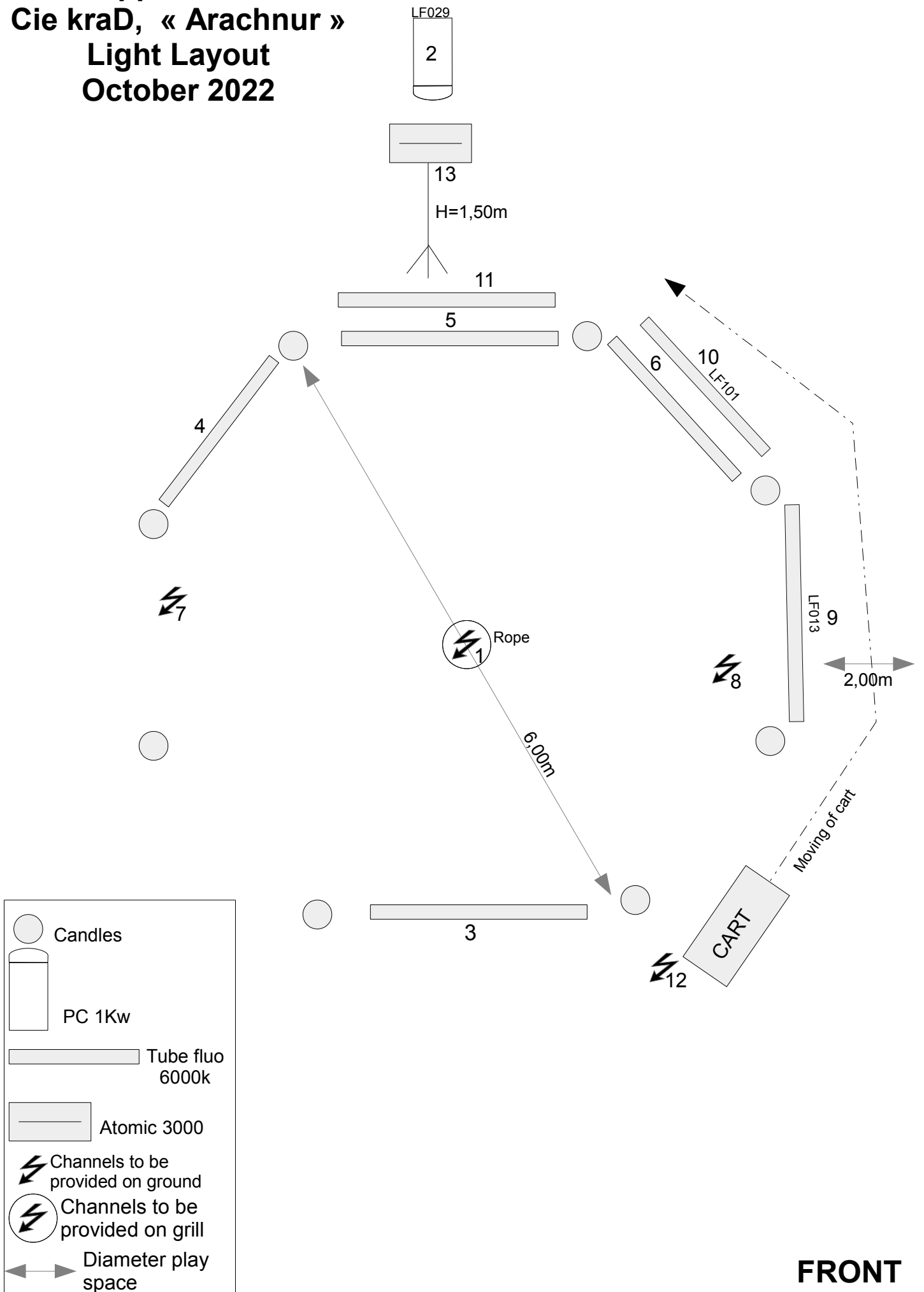
-For three people, separate or shared rooms possible.

We are open to different kinds of accommodation: hotel rooms, caravans, etc.

Nearly all our requests are negotiable / adaptable, but please contact us to in order to find new solutions.

Appendix 1 Cie kraD, « Arachnur » Light Layout October 2022

BACK



FRONT

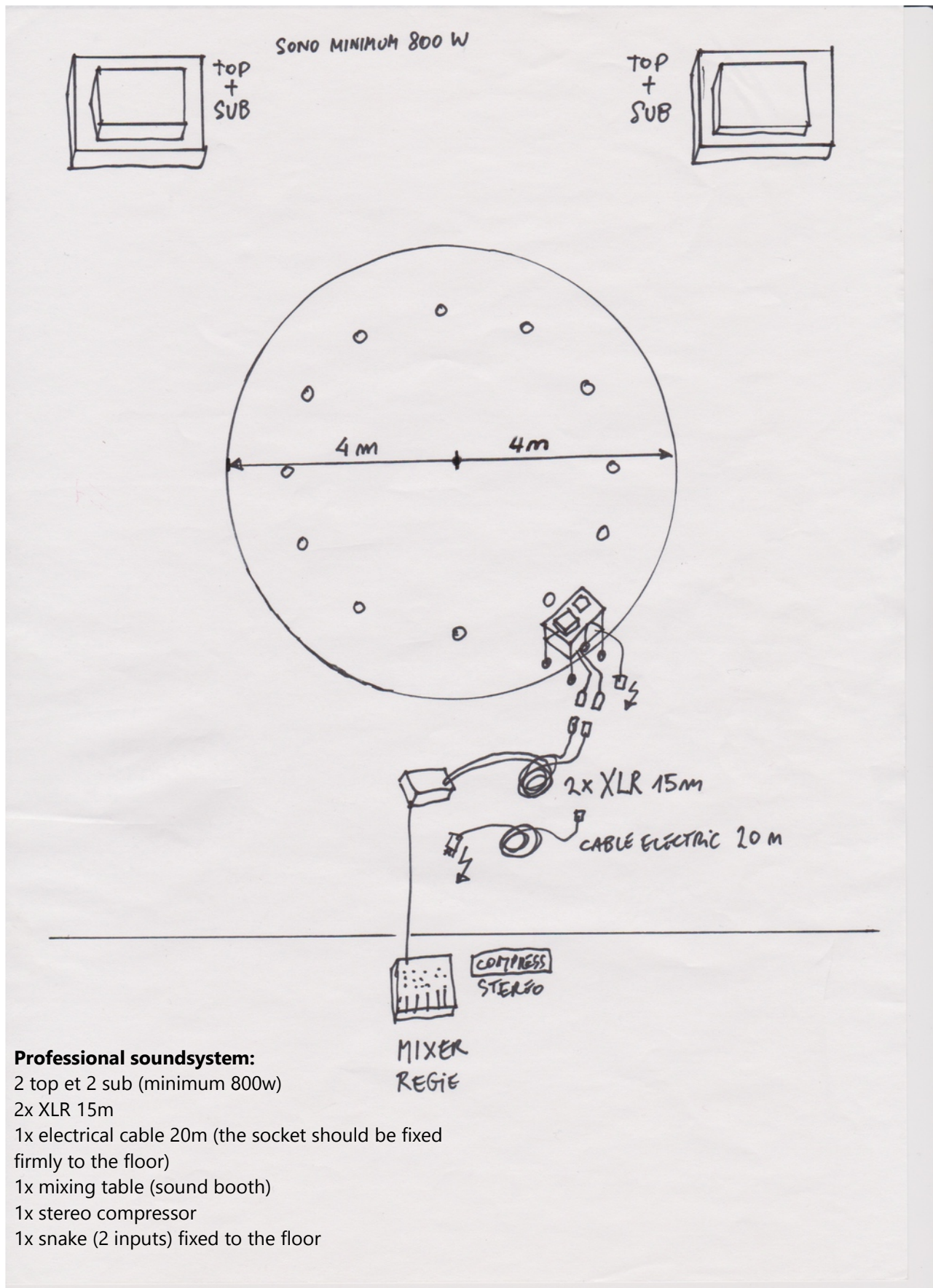
Appendix 2
CIE kraD
« Arachnur »
LIGHT PATCH

Ch	Entitled	Projector	Color Filter	Pointing
1	Rope	Suspension provided by the cie	LF201	From above rope
2	Back	1 x PC 1Kw	LF029	Aperture equivalent to the play area delimited by candles
3	Néon face	Tube fluo 6000k	-	On the ground
4	Néon left	Tube fluo 6000k	-	On the ground
5	Néon back	Tube fluo 6000k	-	On the ground
6	Néon right	Tube fluo 6000k	-	On the ground
7	Construction lamp	Lamp provided by cie	-	On the ground at the left
8	Rope-lamp	Lamp provided by cie	-	On the ground at the right
9	Néon Claudia	Tube fluo 6000k	LF121	On the ground at the right
10	Néon Claudia	Tube fluo 6000k	LF013	On the ground at the right
11	Néon Claudia	Tube fluo 6000k	LF101	On the ground in the back distance
12	Cart	Lamp provided by cie	LF121	-
13	Strobe	Atomic3000 or equivalent	-	On foot in the back distance (H=1m50)
14	Smoke machine	Depending on the equipment offered	-	In the back distance
15	Public	According to room lighting	-	Public

Appendix 3

Cie kraD, « Arachnur »

Sound technical rider



Professional soundsystem:

- 2 top et 2 sub (minimum 800w)
- 2x XLR 15m
- 1x electrical cable 20m (the socket should be fixed firmly to the floor)
- 1x mixing table (sound booth)
- 1x stereo compressor
- 1x snake (2 inputs) fixed to the floor